

The image shows the interior of a carriage house. A dark, tufted leather seat is the central focus, set against a dark wood-paneled wall. Above the seat is a large, ornate mirror. To the right, a glowing lantern is mounted on a dark metal post. Another lantern is visible on the left wall. The overall atmosphere is classic and elegant.

# LONGYEAR Review

SPRING/SUMMER 2025

The Carriage House at 400 Beacon Street

# Dear Friends,

The Longyear Board of Trustees is pleased to announce a new fund in honor of former trustee Reid Wagstaff and his wife, Susi. The H. Reid and Susi Smucker Wagstaff Education Fund honors Reid's 21 years of service on the Board of Trustees and recognizes the tremendous value he and Susi placed on education. In recent decades, they established scholarships at the University of Michigan, the University of Akron, and Wayne College in Ohio and set up a fund at Longyear to support the professional development of staff members.

During his tenure as a trustee, Reid served as chairman and vice-chairman of the board, and he was chair of the Investment Committee for many years. A highlight of his work was serving as chairman of the board when Longyear purchased the Lynn and Chestnut Hill houses in 2006.

The H. Reid and Susi Smucker Wagstaff Education Fund is an endowment fund designed to support the Museum's many educational programs and the staff who work on them. These include programs tailored for young people from schools, camps, and youth groups, as well as publications for children. The current trustees seeded the fund with a gift of \$100,000. Several generous gifts were made to the fund when it was first established, and it is continuing to accept contributions today.

Securing Longyear's financial stability for years to come is a high priority of the Longyear Trustees. Now that the restoration of Mary Baker Eddy's final home at 400 Beacon Street is completed, the Board is turning its attention to sustaining our operations in perpetuity by growing our endowments.

Currently, the Museum's total endowments and other long-term invested funds (including the endowment established by founder Mary Beecher Longyear) stand at \$27 million. With the Board-approved spending policy of 5 to 6 percent, the endowments generate approximately \$1.5 million toward Longyear's \$5 million annual operating budget. This means Longyear needs to raise \$3.5 million each year, as well as seek additional funds to support capital projects at the Mary Baker Eddy Historic Houses and the Museum. By substantially growing Longyear's endowment funds, the Trustees are determined to strengthen the Museum's ability to fulfill its mission for years to come.

For those who give to our endowments, you can be assured that Longyear will steward your gift wisely, and that your investment will have a lasting impact on an organization you care deeply about. If you would like to learn more about how you can help Longyear grow its endowment, I would love to talk with you. Please feel free to reach out to me at [shouston@longyear.org](mailto:shouston@longyear.org) or at 617.278.9000, ext. 420.

From all of us at Longyear, thank you for the many ways you are currently participating in and supporting our work!

Warmly,



Sandra J. Houston

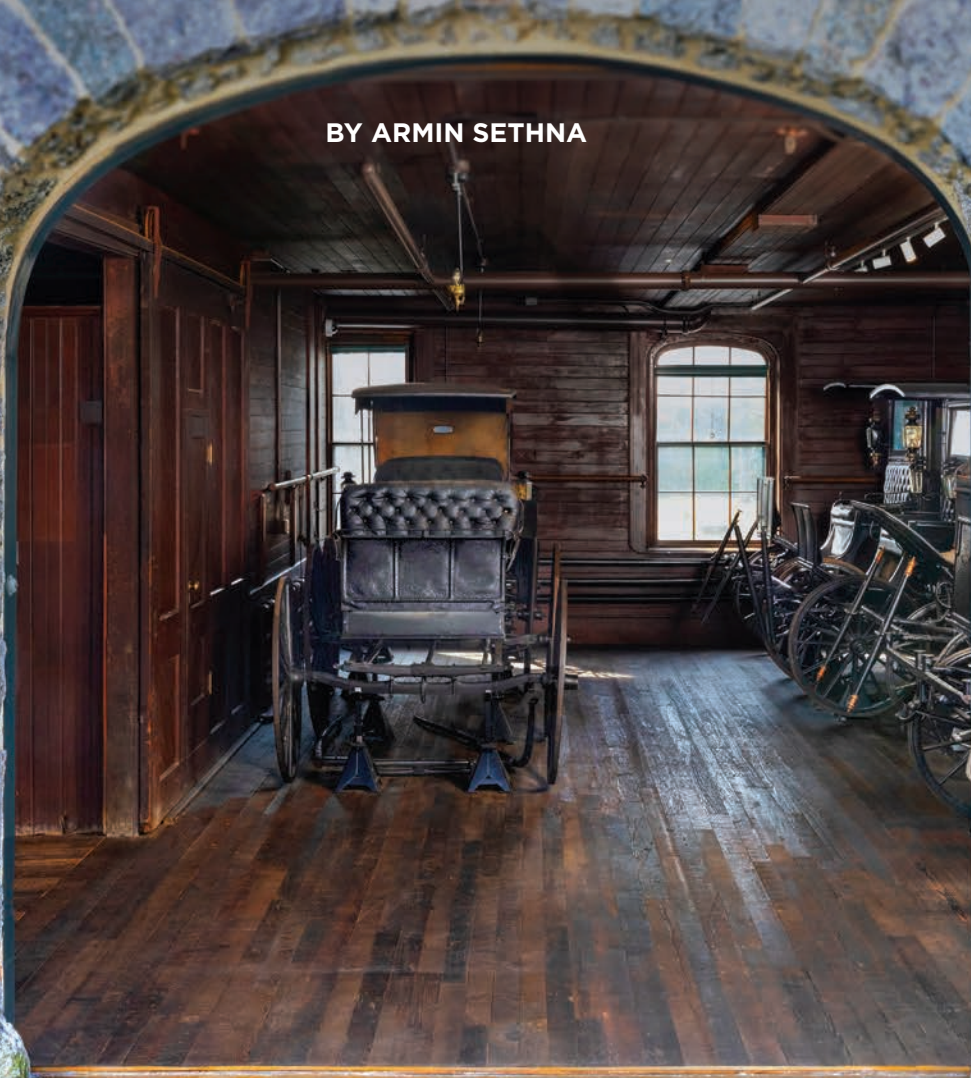


Former Longyear trustee Reid Wagstaff (far left) with current trustees Francesca Jordan Karpel, Richard Grier, Deborah Thompson McNeil, James Hertlein, and James Rosebush, visiting the Mary Baker Eddy Historic House in Amesbury, Mass., in 2022. **Front cover:** Detail of a Rockaway-style carriage belonging to Mary Baker Eddy, on display in the 400 Beacon Street carriage house. Photo by Lisa Abitbol.

# PRIVACY, PRAYER, PERCEPTIONS

WHAT THE CARRIAGE HOUSE AT 400 BEACON STREET TELLS US  
ABOUT MARY BAKER EDDY'S PUBLIC AND PRIVATE MOMENTS

BY ARMIN SETHNA



Lisa A bitbol

**W**ith a hefty push, the massive barn door glides open along metal rails, just as it did more than a century ago. Sunlight filters into a spacious, wood-lined interior, illuminating a neat row of stalls to the left—and, directly in front, an array of six historic horse-drawn vehicles.

As you step across the threshold of the imposing 19th-century stone carriage house on the grounds of Mary Baker Eddy's final residence in Chestnut Hill, Massachusetts, it's easy to be transported back in time ... to imagine the soft whinny of horses, the sweet scent of hay and oats at feeding time, the gentle clink of harness buckles and bits as a carriage is readied for a journey.

*(Continued on page 2)*

Originally constructed in 1892, this three-story building was an active, functional workspace during the years that the Discoverer, Founder, and Leader of Christian Science and her household lived at Chestnut Hill (1908–10). There were horses to be fed, watered, and groomed, then hitched to a carriage, wagon, mower, or snowplow—to carry people, groceries, and mail or trim the lawn and clear the driveway in winter. There were two dairy cows stabled on the lower level to be milked daily and led to grazing in the lower reaches of the 8.5-acre property. And, in addition to multiple carriages, there were automobiles that needed cleaning and maintenance.

Among these myriad tasks, one that took priority and was undertaken with greatest care was preparing for Mrs. Eddy's daily carriage ride. It began precisely at 1 P.M. each afternoon, and you could have set your watch by it!<sup>1</sup>

Princess and Major, a fine pair of black horses, would be brushed until they gleamed and then harnessed. A few minutes before the hour, that great barn door would slide open, and the carriage would start up the curving driveway to the far side of the main house. There, at the sheltered east porte-cochère, located almost directly below her second-floor study, Mrs. Eddy would step into the passenger compartment and take her seat.

Then, clip-clop, off the carriage would go, exiting onto Beacon Street. The ride often wound around the nearby Chestnut Hill reservoir, coachman Frank Bowman at the reins, a top-hatted Calvin Frye by his side, and their passenger free to enjoy the view, wave at passersby, or pray quietly.

### A Treasured Daily Practice

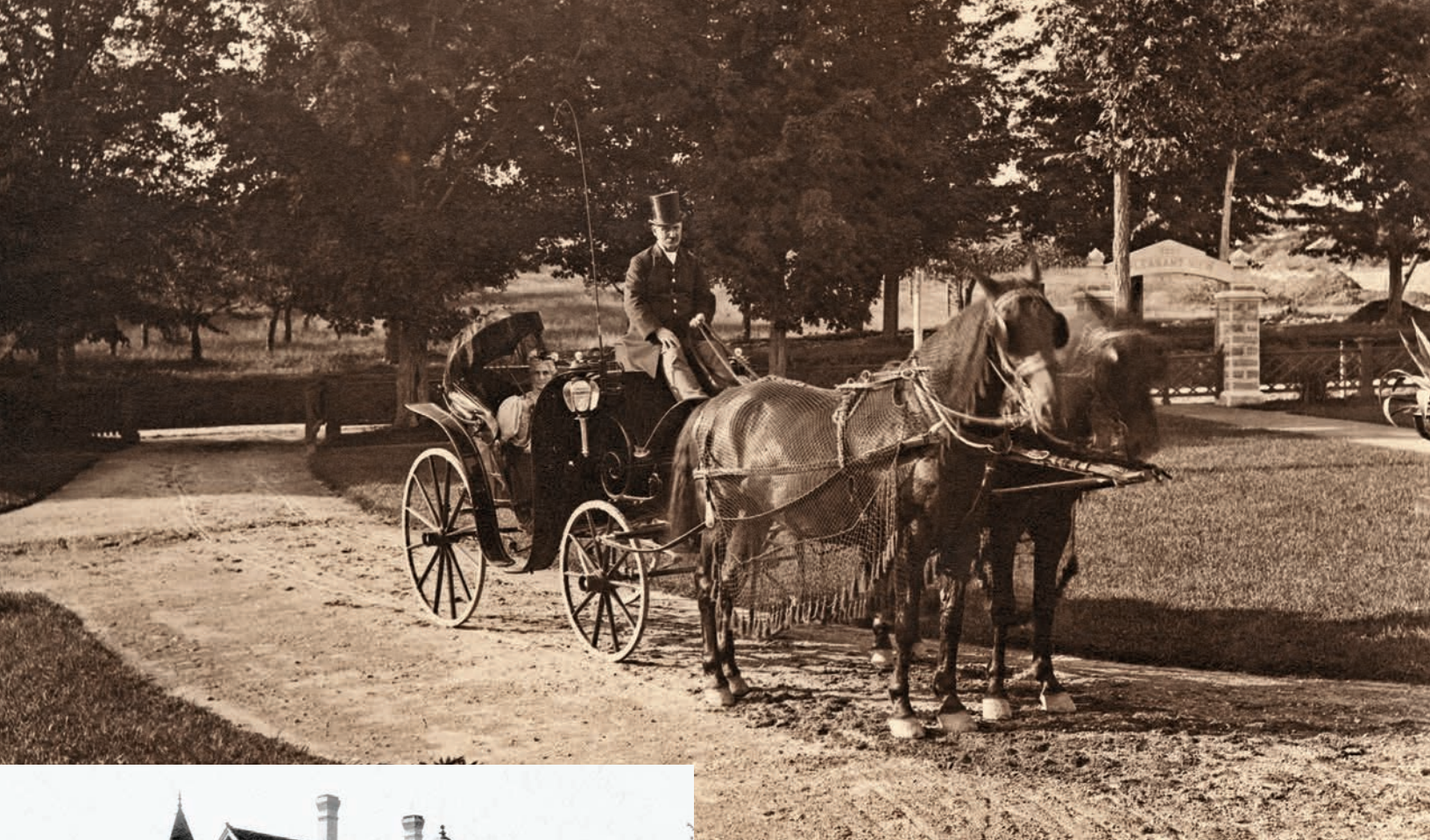
Longyear Museum's collection of seven horse-drawn carriages and accessories belonging to Mrs. Eddy—as well as historic photos and reminiscences—helps us envision and understand the import of her daily drive. This trove of artifacts and documents offers insights into the delicate balancing act Mrs. Eddy and her staff performed. On the one hand, there was the need to address the demands and expectations placed on Mrs. Eddy as a public figure, leading a rapidly expanding Church and worldwide religion. On the other, there was protecting the well-deserved time and opportunity for her to enjoy a “one hour cheery vacation from the desk,” as she once dubbed it.<sup>2</sup>

*(Continued on page 4)*

**Right:** On this carriage ride in Chestnut Hill in 1909, Mrs. Eddy obligingly leaned forward for a press photographer. She was accompanied by Frank Bowman at the reins and Calvin Frye. Longyear Museum Collection (hereafter referenced as LMC).







**Top:** Mrs. Eddy at Pleasant View in her Victoria carriage. It had a foldable top and was named after Queen Victoria. LMC.

**Above:** Pleasant View, Mrs. Eddy's home in Concord, New Hampshire. LMC.

The tradition of daily carriage rides began in the early 1890s, after Mrs. Eddy moved to Concord, New Hampshire, to immerse herself in a new phase of life and work. Deeply engaged in prayer, in writing and editing, and in guiding and establishing her Church, she savored these outings.

Sometimes, she rode through Concord's city streets, carrying little bags of "peanuts and candies ... to distribute to the children," remembered one member of the household.<sup>3</sup> "Many of them knew her," another worker at Mrs. Eddy's home recalled, "and their smiling faces made her heart glad."<sup>4</sup>

At other times, the carriage would travel along back roads. In fact, it was on one such ride in the fall of 1891 that Mrs. Eddy spied a farmhouse—a modest building, a pastoral setting, an expansive vista—that appealed to her. By 1892, she had purchased, renovated, and moved into "Pleasant View," which would be her home for nearly 16 years.

#### **Press and Public Interest**

Soon, Mrs. Eddy's growing renown as a religious leader and author meant that cherished moments of solitude and simple recreation were increasingly intruded upon. By the mid-1890s, she had a new carriage that afforded a measure of privacy, even as her drive attracted attention from newspaper reporters, her own students and followers, and members of the general public.<sup>5</sup>

Within a few years, the press was reporting on Mrs.

Eddy's carriage outings as a barometer of her health—and, by extension, that of the Christian Science movement as a whole.<sup>6</sup> Reporters even speculated that an imposter was riding in the carriage and that Mrs. Eddy was ill or deceased.

“It seemed a shame that Mrs. Eddy could not have the privacy of an ordinary citizen,” observed John Salchow, a handyman and groundskeeper who joined her household in 1901. “When I first came to Pleasant View it was not so bad, but finally it got so that nearly every time she went out people would peek from behind their windows or attempt to waylay her on the road.”<sup>7</sup>

In 1904, Mrs. Eddy directly addressed the issue of excessive attention from her own followers by adding a By-law to the *Manual of The Mother Church*. It read in part: “Neither a Christian Scientist, his student, or his patient, nor a Member of the Mother Church—shall daily and continuously haunt Mrs. Eddy's drive ... as she desires one hour for herself.”<sup>8</sup>

But attention to those drives—from press and public—continued unabated. “About one dozen strollers watch my house and carriage each day,” Mrs. Eddy confided in a June 1906 letter to a trusted worker, adding a heartfelt, “Let me be alone with God.”<sup>9</sup> A few months later, countering speculative press reports, she informed the *Boston Herald* plainly: “I am in usual good health, and go out in my carriage every day.”<sup>10</sup>

### Alertness and Action

Occasionally, attention to her drives carried threatening undertones. One such instance occurred just before the trumped-up 1907 “Next Friends” court case, which would allege that Mrs. Eddy was incompetent and being manipulated by some of her staff.

One day, unexpectedly, Mrs. Eddy asked that Mr. Salchow ride behind her carriage on his bicycle. This “he did each day for nearly two weeks” household worker Minnie Scott tells us—despite one of the secretaries expressing “strong ... disapproval,” concerned that the action could indicate weakness or fear of the public on Mrs. Eddy's part.

Then, just as abruptly, Mrs. Eddy had Mr. Salchow discontinue this practice.

The very next day, Mrs. Scott's reminiscence continues, the *New York World* newspaper disclosed that “for two weeks men had been in Concord watching [for] an opportunity to hold up Mrs. Eddy's carriage ... and drag out what they called the ‘dummy’ inside.”<sup>11</sup>

Press attention to her every move only became more intense when Mrs. Eddy moved to 400 Beacon Street in 1908. Her daily outing from the Chestnut Hill house could sometimes feel more of an obligation than a respite.<sup>12</sup>

Nevertheless, the drives around the local reservoir and



**Top:** The carriage house and barn at Pleasant View. LMC.

**Above:** John Salchow atop a load of hay in the Pleasant View fields. LMC.



**‘It seemed a shame that Mrs. Eddy could not have the privacy of an ordinary citizen.’**

*—John Salchow, groundskeeper*

being, quite another woman.”<sup>17</sup>

Mr. Tomlinson also relates a healing, as told to him by a friend, of a man with a disabled arm. She said the man “had been troubled for a long time. ... [His arm] was in such a bad condition that he could not lift his hand to his head. He hoped that he might see Mrs. Eddy, and while he was standing at the entrance to the Reservoir park, Mrs. Eddy came toward him in her carriage. He lifted his hand to his head to tip his hat to her, forgetting all about himself. ... From that moment, he found himself completely healed.”<sup>18</sup>

Whether Mrs. Eddy’s outing included encounters such as these, or went by uninterrupted, it was a time to treasure, “my time for communion with God,” as she noted.<sup>19</sup>

Eventually, though, the carriage and its occupant would head homeward, Princess and Major drawing them back up the driveway of 400 Beacon Street. There, at the private portecochère, “Faithful John” Salchow or another helper would be waiting to escort the Leader of the Christian Science movement back up to her study for another productive afternoon of meetings, prayer, and writing.

As for Princess and Major ... picture them heading back to the carriage house, in through that large, welcoming doorway. There, they would be unhitched, brushed down, and led to their stalls for a well-earned feed and watering.

*Armin Sethna is Longyear’s senior writer/editor.*

through nearby Newton were also joyous opportunities to interact with and bless others. On winter drives, for instance, she enjoyed seeing children playing and sledding in the snow, at times stopping to nod and smile to them.<sup>13</sup>

Sometimes, household metaphysical workers like Laura Sargent or Ella Rathvon joined her. “On a few occasions,” Mrs. Eddy’s maid Adelaide Still recalls, “she asked me if I would like to go, and as we passed flowering shrubs, or autumn leaves, she would call my attention to them and say, ‘Aren’t they beautiful?’”<sup>14</sup> Such careful notice of her surroundings—and their deeper messages—is also recorded by secretary William Rathvon: “While enjoying the beautiful trees and shrubbery of her reservoir drive, she remarked, ‘Every leaf upon every tree declares perpetually that God is Love.’”<sup>15</sup>

Mrs. Eddy also told Mr. Rathvon, “I have uttered some of my best prayers in a carriage.”<sup>16</sup> There were concrete results from those prayers.

Once, she invited her prominent (and recalcitrant) student Augusta Stetson along on a carriage ride. Mrs. Eddy was mindful of Mrs. Stetson’s comfort, sharing her lamb’s-wool lap robe with her (it was a chilly December day), and asked the coachman to drive by the reservoir and come home by the prettiest route. Per secretary Irving Tomlinson, “When she returned from that drive Mrs. Stetson was, for the time

**Top, left:** The carriage house at 400 Beacon Street, circa 1908. LMC.

**Opposite, top:** (Counterclockwise from front left) A two-seater buggy; an American station wagon, often used for Mrs. Eddy’s drives at Chestnut Hill; the Victoria; two Rockaway-style coupés; and a fringe-top surrey (only partially visible behind the buggy).

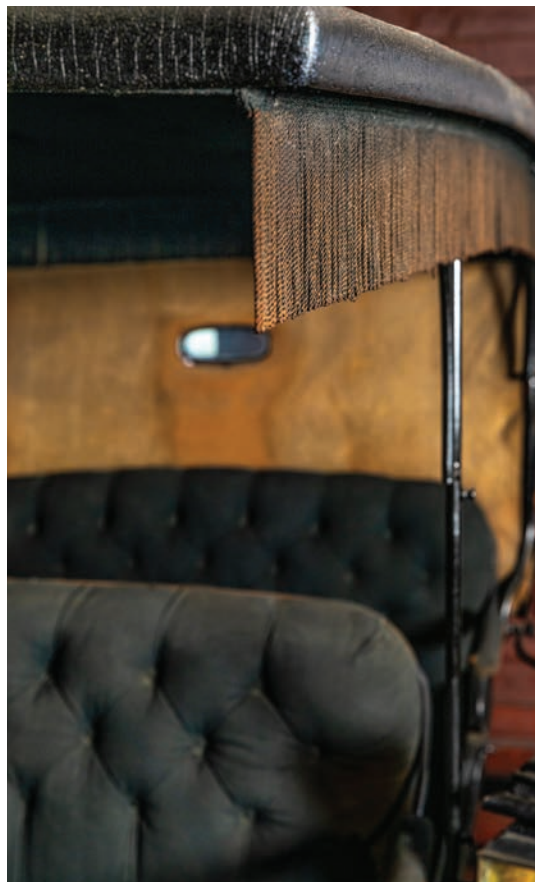
**Opposite, bottom:** Carriage details, including the fringe on the surrey.



Heidi Gumula, DBVW Architects



Lower photos: Lisa Abitbol





## A Walk Through The Carriage House

The spacious main level of the three-story carriage house on view today is largely in its original condition, with only one change made to comply with building codes—the construction of a wide staircase, with railing, for easier access to the lower level.

Intact and visible in the area with the horse stalls and their well-worn floorboards are metal hayracks and feed tubes that let down grain from the upper hayloft. A tack cabinet holds a pair of sturdy leather harnesses, adorned with Mrs. Eddy’s initial. (Longyear hired a team of conservators some years ago to clean and stabilize these artifacts, which are more than 120 years old.)

Five of the six horse-drawn vehicles displayed here were purchased by Longyear from The First Church of Christ, Scientist, Boston, in 2007 (along with some of the furniture in the house). The sixth—the open-top Victoria—was donated to Longyear in 2016 by The Mother Church.<sup>20</sup>

Longyear’s Collections and Research teams have worked assiduously to trace their provenance and learn about their uses in order to help acquaint visitors with these historic conveyances—and how they fit into life in Mrs. Eddy’s household.

Drawn by a single horse, the buggy was likely used to travel the 10 miles to bustling Faneuil Hall Market for fresh foods and groceries. The fringe-top surrey ferried visitors to and from the nearby Chestnut Hill train station, including Church officers and prospective employees. And Longyear

has several photos of Mrs. Eddy in the Victoria, which sports a fold-down hood for good weather. (See page 4.)

Three of the carriages here are designed along the lines of the popular Rockaway coupé—a lighter four-wheeled carriage, with a driver’s seat built into the body, under a projecting roof. The American station wagon (top photo, page 7, far right) was popular and comfortable. (It was in this carriage that Mrs. Eddy was photographed by the press in 1909. See page 2.) Two other coaches in similar Rockaway style held two passengers each and were manufactured by local firms in Boston and Taunton, Massachusetts.

These coaches were often used by household members for summer and winter outings. According to cook Margaret Macdonald, it was Mrs. Eddy’s “wish that each worker should go for a ride every day, or have some opportunity to be out of doors. ... [S]ome of us went riding in the carriage when the horses were exercised.”<sup>21</sup> The staff occasionally captured these outings on camera.

Some of the carriages could be converted into sleighs by removing the wheels and attaching runners—one set of which is on display in the carriage house, along with a replica of sleigh bells used in that era. According to Mr. Salchow, Mrs. Eddy “was very fond of sleigh riding. ... [and] on a nice frosty day it made a pretty sight to see the sleigh and hear the jingle of the bells.”<sup>22</sup>

—A.S.



**Opposite:** A neat row of horse stalls in the carriage house, with sleigh runners tucked into one of the stalls.

**Left:** The buggy (front) and fringed surrey were put to regular use ferrying supplies and visitors to and from the Chestnut Hill train station.

**Below:** Longyear staff recently installed this display of original leather harnesses and bridles in the tack cabinet of the carriage house. Inset detail shows the monogrammed "E" that appears on various parts of the harnesses.



Photos this page: Lisa Abitbol



## Horses and Helpers

**F**or the carriages to fulfill their functions, they needed well-trained and well-cared-for horses—animals that Mrs. Eddy loved and was quite comfortable with, having grown up on a working farm.

From recollections and photos of the years in Pleasant View, we learn about Jerry and Jean. Household worker Clara Shannon recalls that, after her rides, Mrs. Eddy would walk to the end of the veranda to speak to both horses, patting their necks and faces. “It was very beautiful ... to see her tenderness and love to those horses.”<sup>23</sup> Other horses were similarly showered with affection—Prince and Duke, a team of matched bay geldings acquired in 1898; and black mares Dolly and Dutchess, who followed.

During the Pleasant View years, August Mann was primary coachman and worked closely with his colleague and friend John Salchow. Together, they fed and groomed the horses, mowed and cared for the lawns and garden, and built carts and other contraptions to simplify farming and groundskeeping work.<sup>24</sup> One of Mr. Salchow’s most cherished tasks was holding the bridles of the horses, keeping their heads steady, while Mrs. Eddy stepped in and out of her carriage. At 400 Beacon Street, after the drives, he often

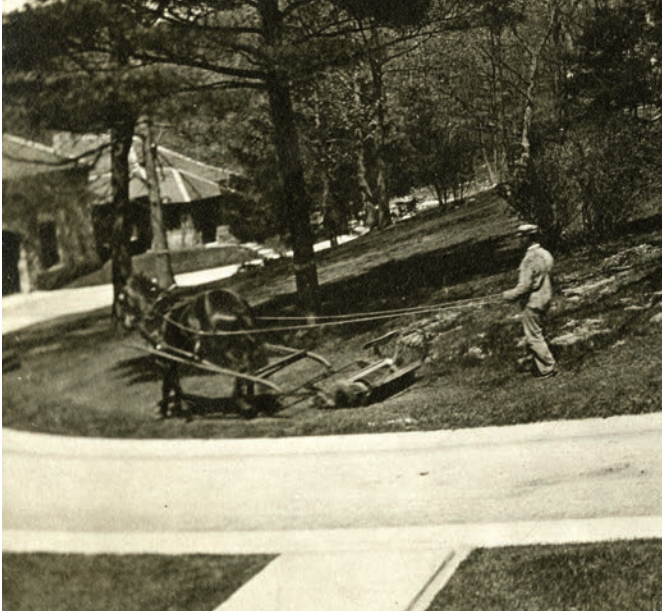
accompanied her to the elevator and back up to her study, occasions when she shared a laugh and light banter with him.

The stalls at the Chestnut Hill carriage house bear nameplates for Princess and Major, the last pair of carriage horses that served Mrs. Eddy’s household. In 1909, a third stablemate took up residence—Nellie, who served primarily as a workhorse, pulling the mower, snowplow, or buggy.

Princess, we are told, “was sometimes inclined to be skittish, and Mrs. Eddy would speak to her from the carriage, to quiet her.”<sup>25</sup> Nellie is described by groom Nelson Molway as a “fine loveable beast, full of all kinds of tricks; it almost seemed as if she could do everything but talk.”<sup>26</sup> Major, for his part, later enjoyed a long and pampered retirement.<sup>27</sup>

For two years in Chestnut Hill, Vermonter Frank Bowman served as Mrs. Eddy’s carriage driver, always prompt, well-groomed, and solicitous in his care for horses and passengers. Mr. Bowman’s college-age son, Robert, reportedly knew how to drive a car, and it’s likely that he taught dad how to do so. Soon, Mr. Bowman was both coachman *and* chauffeur, equally at ease ferrying passengers by carriage or car.

—A.S.



Lisa Abitbol

**Opposite:** Mary Baker Eddy in her brougham carriage at Pleasant View, circa 1906. August Mann holds the reins, and Calvin Frye is at his side. LMC.

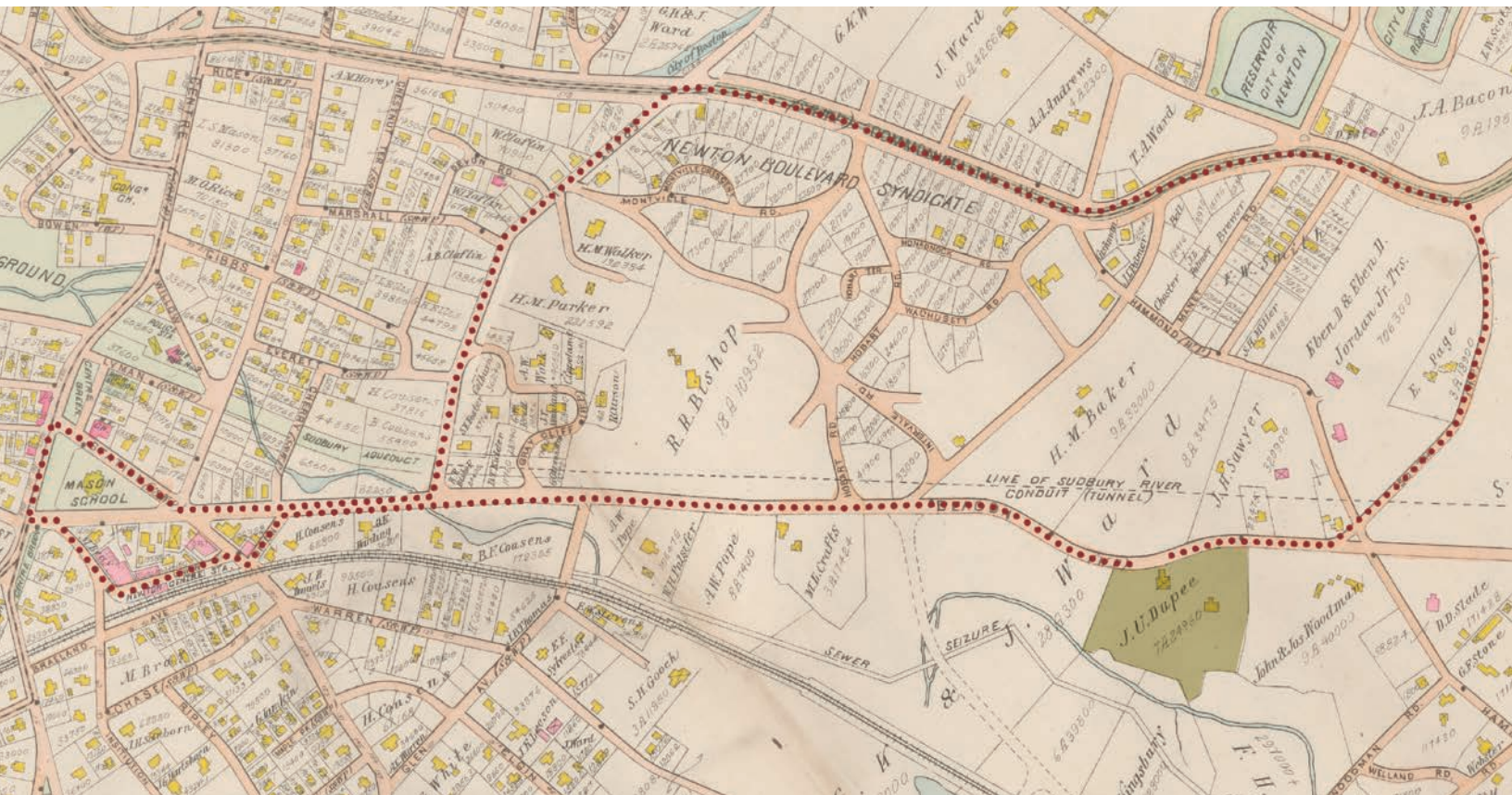
**Above left:** Staff member Nelson Molway mows the front lawn at 400 Beacon Street with horse Nellie. Photo by Calvin A. Frye. P01209, The Mary Baker Eddy Library. ©The Mary Baker Eddy Collection.

**Above right:** Life-size horse heads crafted by Longyear's facilities specialist, Paul Paradis, display the original bridles and reins used on Mrs. Eddy's carriage horses.

**Left:** Nelson Molway with one of the horses in the Chestnut Hill carriage house. Photographer unknown. P01535, The Mary Baker Eddy Library. Courtesy of The Mary Baker Eddy Collection.

**Bottom:** A group of household staff at 400 Beacon Street enjoying a ride in Mrs. Eddy's White steam touring car, with Frank Bowman at the wheel. LMC.





**Top:** The rear of the three-level carriage house and adjoining two-story gatehouse: Cows were stabled on the lower level and horses on the middle floor. Hay and grain were stored at the loft level.

**Above:** A period map showing the route (in red dots) that Mrs. Eddy's carriage would often follow through the town of Newton. Her home, earlier owned by the Dupee family, is the property marked in green.



**Top:** A carriage outfitted with sleigh runners for winter rides. LMC.

**Middle:** Cows grazing at Chestnut Hill, circa 1908. Photographer unknown. P05502, The Mary Baker Eddy Library. Courtesy of The Mary Baker Eddy Collection.

**Bottom:** A buggy emerges from the carriage house. Private collection.

#### Endnotes

- 1 John G. Salchow, "The Privilege of Serving Our Leader," *We Knew Mary Baker Eddy* Expanded Edition Vol. I (Boston: The Christian Science Publishing Society, 2013), 383.
- 2 Mary Baker Eddy to Gilbert C. Carpenter, December 21, 1902, L14133, The Mary Baker Eddy Collection, The Mary Baker Eddy Library, Boston, Massachusetts, hereafter referenced as MBEL.
- 3 Salchow, *We Knew Mary Baker Eddy*, 383.
- 4 Anna White Baker reminiscences, 28, MBEL.
- 5 Sherry Darling, "Just One Hour," *The Christian Science Journal* 11 (Nov. 2008): 16.
- 6 "Private Carriage, Public Journey," MBEL, [marybakereddylibrary.org/project/carriage/](http://marybakereddylibrary.org/project/carriage/)
- 7 John G. Salchow reminiscences, 28, MBEL.
- 8 This By-law was later revised to its current form in the *Manual* as Article VIII, Section 27, "The Golden Rule."
- 9 Mary Baker Eddy to Professor and Mrs. Hermann S. Hering, June 29, 1906, L10937, MBEL.
- 10 Mary Baker Eddy to the editor of the *Boston Herald*, October 19, 1906, A10175, MBEL.
- 11 Minnie A. Scott reminiscences, 7–8, MBEL.
- 12 Her secretary Adam Dickey notes, "She knew that as long as she appeared in her carriage every day, it would satisfy mortal mind. . . . There were times when it was a very severe task to take this drive." Adam Dickey, C.S.B., "Memoirs of Mary Baker Eddy," *We Knew Mary Baker Eddy* Expanded Edition Vol. II (Boston: The Christian Science Publishing Society, 2013), 423.
- 13 Minnie A. Scott to the Christian Science Board of Directors, May 30, 1935, Minnie A. Scott Reminiscence File, MBEL.
- 14 M. Adelaide Still reminiscences, 20, MBEL.
- 15 William R. Rathvon, "Reminiscences of William R. Rathvon, C.S.B.," 80, MBEL.
- 16 *Ibid.*, 81.
- 17 Heather Vogel Frederick, *Life at 400 Beacon Street: Working in Mary Baker Eddy's Household* (Chestnut Hill: Longyear Museum Press, 2019), 348–349.
- 18 Irving C. Tomlinson, "Reminiscences of Rev. Irving C. Tomlinson, C.S.B.," 61, MBEL. Other accounts of individuals experiencing physical healing and mental uplift during encounters with Mrs. Eddy on her carriage outings can be found in the reminiscences of Mr. Tomlinson as well as Julia Prescott, and in *Mary Baker Eddy: Christian Healer* Amplified Edition, by Yvonne Caché von Fettweis and Robert Townsend Warneck (Boston: The Christian Science Publishing Society, 2013).
- 19 Heather Vogel Frederick and Isabel Ferguson, *A World More Bright: The Life of Mary Baker Eddy* (Boston: The Christian Science Publishing Society, 2013), 134.
- 20 A seventh carriage, an 1895 brougham that was carefully restored to its original condition in 2007 by The Mother Church, is displayed in the Longyear Museum building. The Mother Church also donated two sleighs that are currently stored in the carriage-house hayloft.
- 21 Margaret Macdonald reminiscences, 8, MBEL.
- 22 Salchow, *We Knew Mary Baker Eddy*, 383.
- 23 Clara Shannon, "Golden Memories," 32, Longyear Museum Collection.
- 24 John G. Salchow reminiscences, 16, MBEL.
- 25 M. Adelaide Still reminiscences, 20, MBEL.
- 26 Nelson Molway reminiscences, 8, MBEL.
- 27 See "Mary Baker Eddy's Horses," August 1, 2010, MBEL, [marybakereddylibrary.org/research/mary-baker-eddys-horses/](http://marybakereddylibrary.org/research/mary-baker-eddys-horses/)

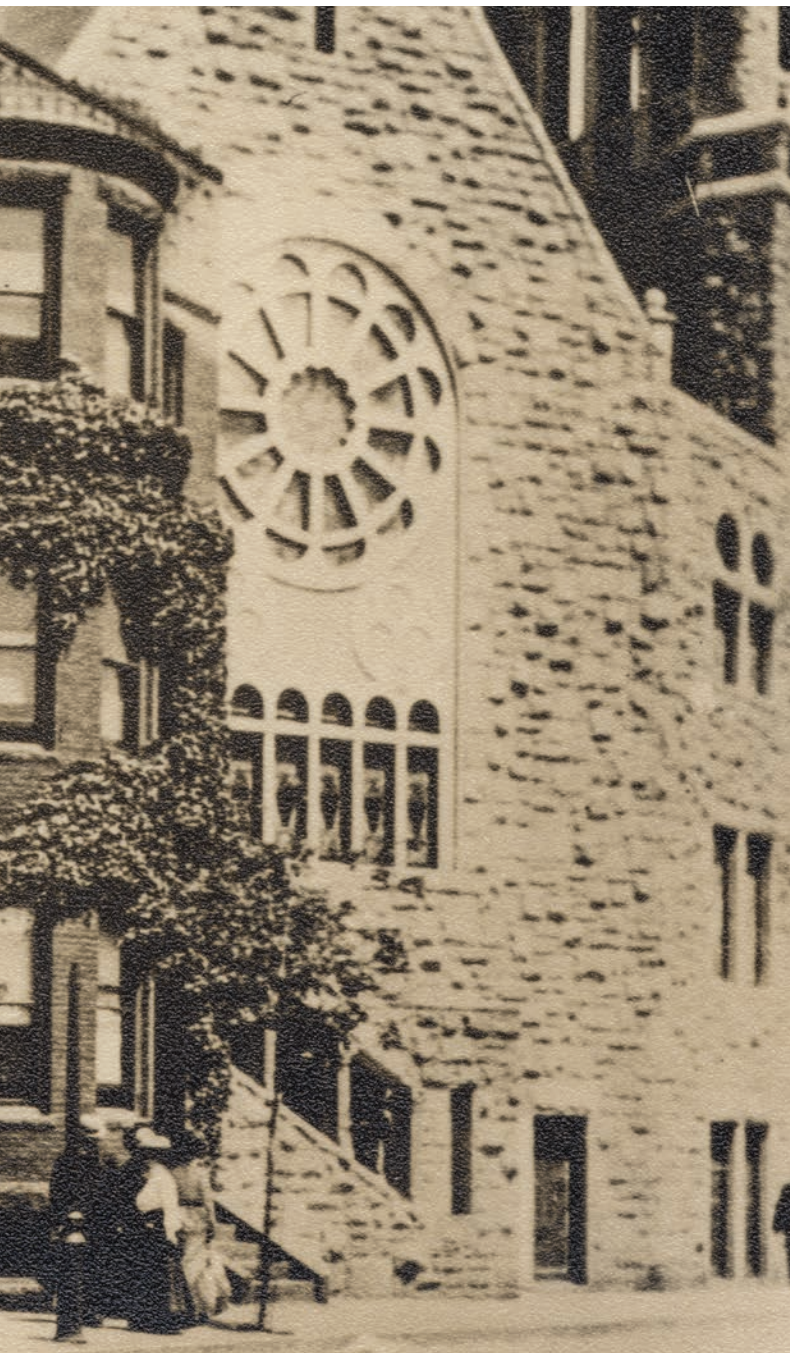
*This issue of the Longyear Review is the third in a series of magazines centered on Mrs. Eddy's final home in Chestnut Hill, Massachusetts. The Spring/Summer 2024 issue focused on the restoration of the property and interpretation of the interior of the house for visitors. The Fall/Winter 2024 Longyear Review looked at the new exhibit on Mary Baker Eddy in the visitor welcome space in the house's lower level, as well as rooms upstairs. Both issues are available at [bit.ly/LYRissues](http://bit.ly/LYRissues).*

# NURTURED BY THE EARLY WORKERS

A YOUNG CHRISTIAN SCIENTIST GROWS UP IN BOSTON  
AT THE TURN OF THE 20TH CENTURY

BY STACY A. TEICHER





“O ur dear Mrs. Eddy said lately: ‘Take up your cross and run!’”

Ethel Reid was 13 when her Sunday School teacher shared this gem in a note thanking her for the gift of a Christmas calendar. Mary Speakman, Ethel’s teacher, had been a prominent educator in Philadelphia before moving to Boston because of her interest in Christian Science. There, she began serving at The Mother Church, The First Church of Christ, Scientist.

Mary Baker Eddy’s statement, Miss Speakman elaborated, “is very emphatic and makes us see how unworthy we are when we linger and lag and are driven by duty, instead of springing energetically to work. Study this week’s beautiful [Bible] Lesson willingly and well.”<sup>1</sup>

Encouragement such as this and examples of people “springing energetically to work” abounded in young Ethel’s life, contributing to her lifelong love of Christian Science.

When she was six, Ethel’s family started riding an electric trolley from their home in Plymouth, Massachusetts, up to Kingston, four miles away, to attend Christian Science services. It was 1894, and her parents were so taken with their new understanding of this religion that over the next several years they helped launch a branch church in Plymouth, entered the public practice of Christian Science healing, and packed up their family of six to move to Boston, settling in a neighborhood near The Mother Church.<sup>2</sup>

Here, Ethel and her three sisters were immersed in an environment teeming with people learning how to channel their inspiration into productive work for the Cause. One of their neighbors, Minnie Scott, would become a special

*(Continued on page 16)*

The Christian Science Publishing House at 95 Falmouth St., next to the Original Edifice of The Mother Church in Boston, circa 1899. Longyear Museum Collection (hereafter LMC).

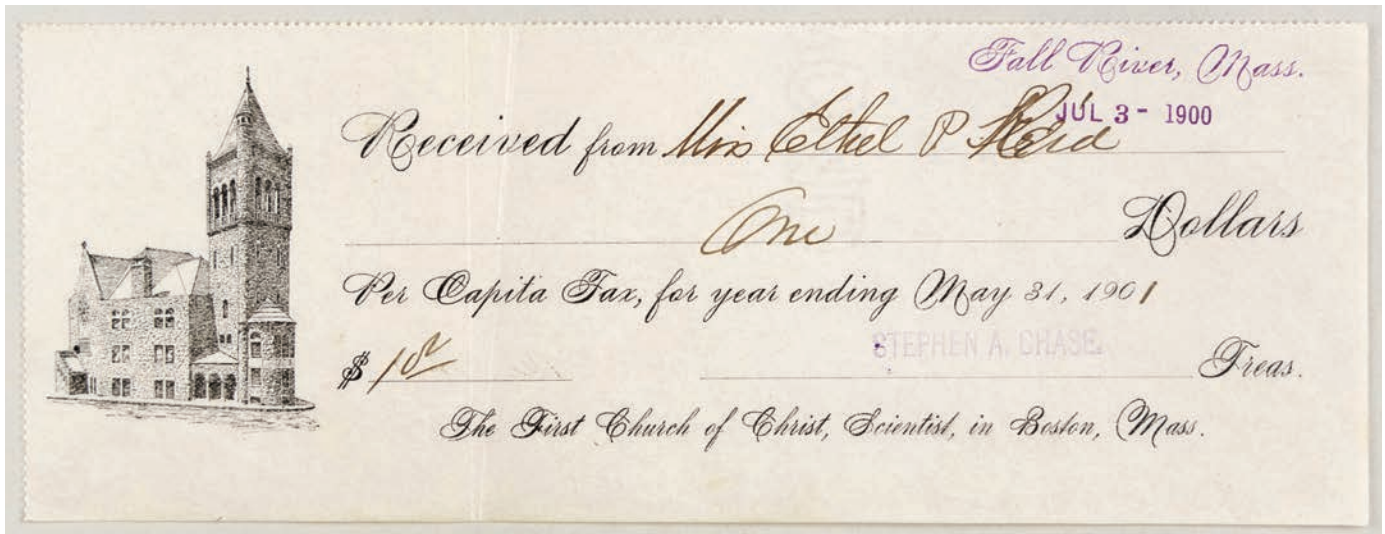
friend to Ethel—and a devoted helper in Mary Baker Eddy’s household, later sharing insights gleaned from that experience.

From the start, little Ethel was eager to do her part. She joined other children known as the “Busy Bees,” who raised money for The Mother Church. Her contributions, which came after the original donations had furnished a room at the church for Mrs. Eddy, went toward a special flower fund.

Ethel had another hands-on role in the growing activities of the movement, too. Her father, Ezra Reid, had formerly been a bookkeeper, and for a time worked in the mail room of the Christian Science Publishing House at 95 Falmouth Street, right next to The Mother Church.<sup>3</sup> “Many a time have my sister and I helped in wrapping literature,” Ethel recalled in a handwritten reminiscence.<sup>4</sup> Mr. Reid went on to launch the Reid Publishing Company, with a catalog selling postcards, note cards, artwork, and souvenirs related to Christian Science.

The start of the new century was a special time for Ethel. She turned 12 that year and joined The Mother Church on June 2, 1900.<sup>5</sup> The annual meeting took place three days later in Mechanics Hall on Huntington Avenue. Ethel was there, in the standing-room-only second balcony, hoping along with the rest of the crowd that Mrs. Eddy would make an appearance.<sup>6</sup> After all, the year before, her father and her mother, Emma Reid, had seen the Leader of Christian Science speak at the annual meeting at Tremont Temple.<sup>7</sup>





Mrs. Eddy did not attend the meeting where Ethel was present, but the assembled group sent a message of gratitude to her in response to her message, which had been read at the church services on the preceding Communion Sunday. Mrs. Eddy had told her followers, in part, “The song of Christian Science is, ‘Work—work—work—watch and pray.’”<sup>8</sup> They replied that they were moved “to renewed efforts and holier consecration to the work you have given us to do for all mankind.”<sup>9</sup>

Ethel did get an opportunity to hear Mrs. Eddy speak just a few years later. In June 1903, she, her parents, sister Bertha, and possibly other sisters were among about 10,000 people who traveled to Concord, New Hampshire, and saw Mrs. Eddy give a brief talk from her balcony at Pleasant View.<sup>10</sup>

“I would present a gift to you to-day, only that this gift is already yours. God hath given it to all mankind,” Mrs. Eddy told the gathered throng. “This gift is a passage of Scripture; it is my sacred motto, and it reads thus:—‘Trust in the Lord, and do good; so shalt thou dwell in the land, and verily thou shalt be fed. Delight thyself also in the Lord; and He shall give thee the desires of thine heart. Commit thy way unto the Lord; trust also in Him; and He shall bring it to pass. And He shall bring forth thy righteousness as the light, and thy judgment as the noonday.’”<sup>11</sup>

At 16, Ethel experienced a significant healing. The Christian Science practitioner on her case was Berenice Goodall, C.S.D., a student of Mrs. Eddy’s, with whom Ethel’s parents and sister Lula had taken Primary class instruction. “She healed me of a severe case of something—which was never diagnosed—but which seemed nearly fatal,” Ethel explained.<sup>12</sup>

During the expansion of The Mother Church and its publishing activities, Ethel and her family also had a front-row seat to the transformation of the landscape around the

church in Boston’s Back Bay neighborhood. In the summer of 1904, for instance, the Reids watched as the cornerstone of the domed Extension of the church was laid.

A number of their neighbors in Boston were well-known Christian Scientists, many of them Mrs. Eddy’s students. When her family lived at 25 St. Stephen Street, from 1899 to 1904, Ethel noted that they were “around the corner” from Ira Knapp, a member of The Mother Church’s Board of Directors, and his wife, Flavia, a Christian Science practitioner and teacher, along with their three children. On the Reids’ own street lived Joseph Mann, also a Christian Science teacher, his sister Pauline Mann, and Calvin Hill, a practitioner who went through Normal Class in 1902. Mr. Hill lived with the Manns and was superintendent of The Mother Church Sunday School during part of the time that Ethel attended.<sup>13</sup>

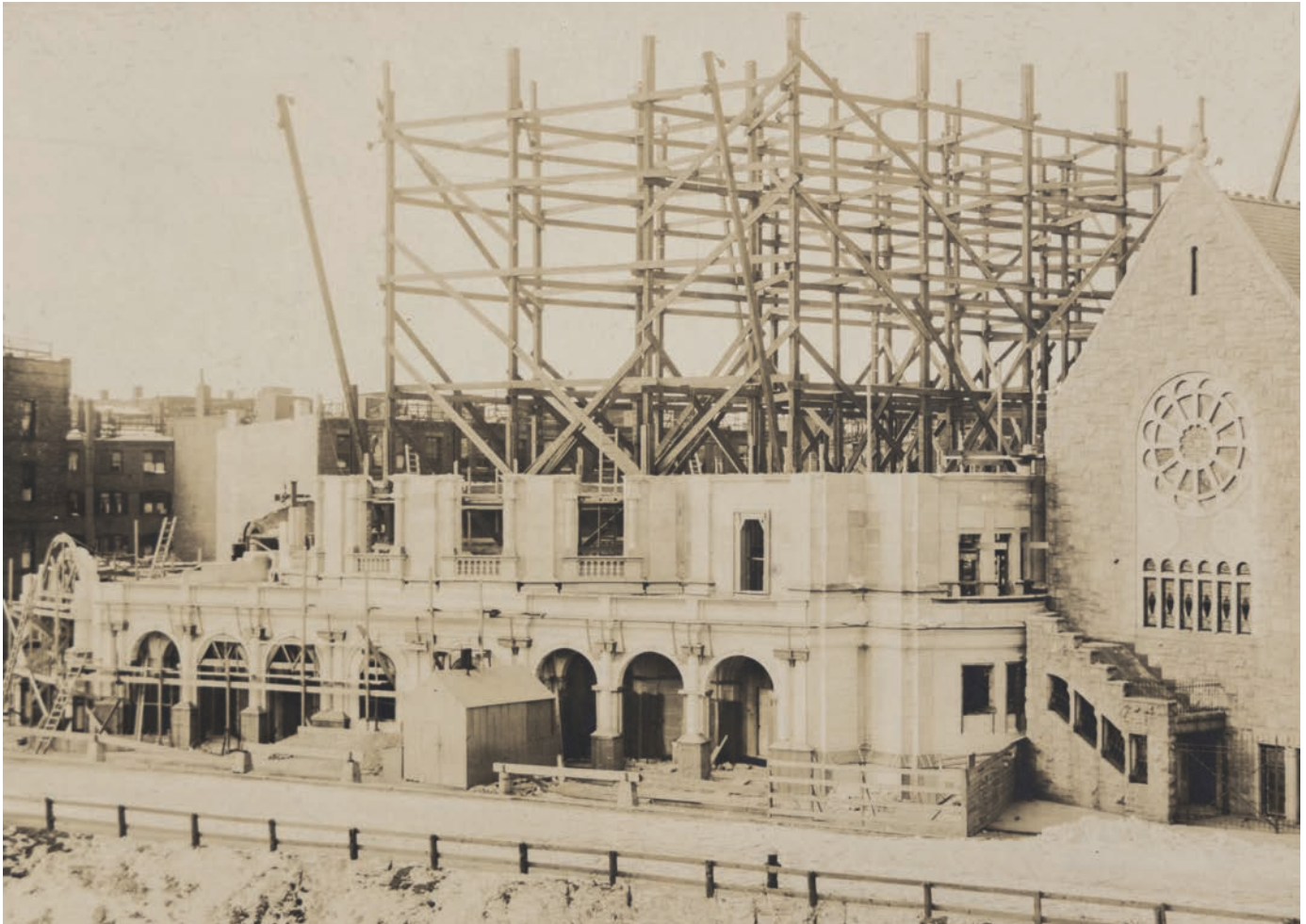
During their first year in Boston, 1898, the Reid family lived on St. Germain Street, next door to Minnie and Clarence Scott, who would soon set up their Christian Science practices nearby. Ethel and Mrs. Scott formed a strong bond.

In 1906, Mrs. Scott was invited to Concord, New Hampshire, to begin helping in Mrs. Eddy’s household. The

**Opposite, top:** Ethel Reid (standing, at left) with two of her sisters, Bertha and Lula (seated), circa 1905. Courtesy of Bill Darrow.

**Opposite, bottom:** Staff at work inside the original Christian Science Publishing House, circa 1899. LMC.

**Top:** Ethel Reid’s per capita tax receipt from 1900, the year she turned 12 and joined The Mother Church. LMC.



**Top:** Ezra Reid took this photo of the Extension of The Mother Church under construction in March 1905. LMC.

**Right:** Minnie Scott. Private collection.

**Opposite:** Ethel's transcription of a note on the back of a photo of Pleasant View sent to her by Minnie Scott. LMC.



following year, she wrote a letter to Ethel, explaining a bit about her work at Pleasant View: "I have been called upon to assume responsibilities that I did not dream I could carry successfully," she confided, "but knowing that 'it is God that worketh in you to will and to do of His good pleasure' gives you confidence to undertake the work that comes, and increases our capabilities."<sup>14</sup>

In February 1907, Minnie Scott invited Ethel to come to Concord for a visit.

"When the time comes that is described in Solomon's Song 2:10 to 13, if you would like to accept the invitation in these verses perhaps you will 'come away' up here to see me," she wrote, "that is, if I can still be as helpful as I believe I am to-day. When you think of me, just know that I am honoring God and all my friends by loving service here. ..."

Mrs. Scott sent her love to the family and urged Ethel to "not neglect your Science study and work, for that insures success in other lines." She signed the letter, "As ever your 'Auntie' Minnie A. Scott."<sup>15</sup>

Ethel gladly accepted her invitation, traveling to Concord with another woman close to the Scotts.

"I remember so clearly walking up Pleasant Street and

# ‘I remember so clearly walking up Pleasant Street and we saw Mrs. Eddy’s carriage coming along.’

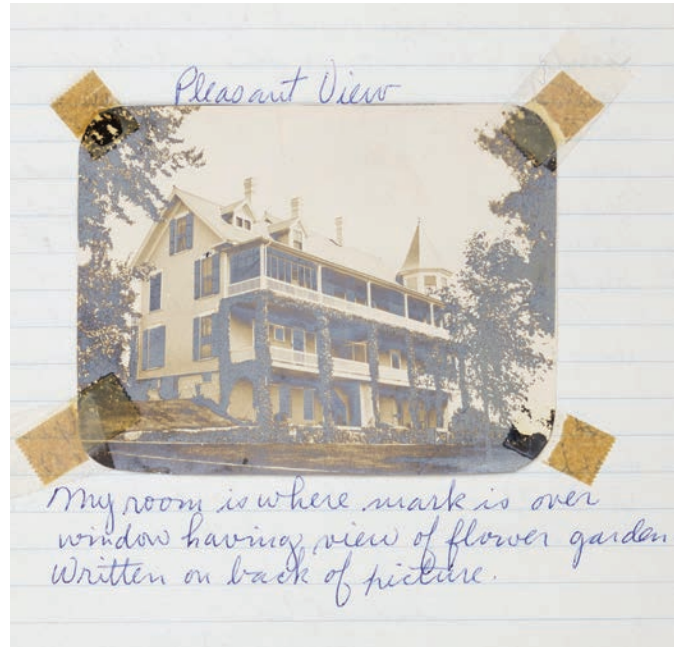
—Ethel Reid Draper Curtis

we saw Mrs. Eddy’s carriage coming along,” she later recalled. “She waved to us (as she did to everyone) and we hastened along to Pleasant View where we were greeted by our dear friend Minnie A. Scott. She had permission from Mrs. Laura E. Sargent to allow me to go out on the balcony and peer into Mrs. Eddy’s study—an experience I shall never forget, as my sister Bertha, our parents, and I were present in June 1903 when the beautiful balcony picture of Mrs. Eddy was taken by Mr. Kimball of Concord. To me, that is the true likeness of our Leader.”<sup>16</sup>

The correspondence between Minnie Scott and Ethel continued after Mrs. Scott moved with Mrs. Eddy and her household to 400 Beacon Street in Chestnut Hill, Massachusetts, in January 1908. That spring, Mrs. Scott sent an invitation to Ethel and Bertha to visit her, but it’s not clear if that visit ever took place.

At Christmastime, Ethel sent a book to Mrs. Scott as a gift. In her thank-you letter, Mrs. Scott noted, “I have not sent out anything but loving thoughts to you all, and it is good to know that thoughts winged with Truth and Love reach the dear ones and bring to them the happiness that is the truest and best. ... The unceasing prayer that the Christ may be born in every heart is going out from this place daily, and in that way the work is blessing all mankind.”<sup>17</sup>

Ethel Reid went on to marry, raise two children, and contribute to civic life in her community. She remained devoted to Christian Science throughout her life, from her work as a child with the “Busy Bees” through active



engagement with her branch church in the town of Sharon, Massachusetts.

The lives of faithful service she witnessed and the letters of her youth that she saved from such experienced Christian Scientists as Mary Speakman and Minnie Scott help show how the seeds of Ethel’s own spiritual progress and dedication were nurtured.

Stacy A. Teicher is Longyear’s senior research associate.

1 Mary E. Speakman to Ethel Reid, Dec. 24, 1901, 1969.656.0010, Longyear Museum Collection.

2 Ethel Reid Draper Curtis, “Memoirs by Ethel Reid Draper Curtis,” 1969.656.0001, 1, LMC; “Notes from the Field,” *The Christian Science Journal* 9 (March 1897): 610–611.

3 Reid Draper Curtis, “Memoirs,” 4. This was before a larger publishing building was erected at 107 Falmouth Street in 1907–08.

4 Ibid. Ethel wasn’t sure if her father’s work included janitorial duties, but notes he “used to bring me foreign stamps from the envelopes in the waste baskets.”

5 Ethel Reid membership document signed by William B. Johnson, June 2, 1900, 1969.656.0004, LMC.

6 Reid Draper Curtis, “Memoirs,” 16; “Annual Church Meeting,” *Christian Science Sentinel* 2 (June 7, 1900): 643.

7 Ethel Reid Draper Curtis letter to the Christian Science Board of Directors, Feb. 27, 1964, 1969.656.0012, LMC; “Mrs. Eddy Was There,” *Boston Globe*, June 6, 1899, 12.

8 Mary Baker Eddy, *Message to The Mother Church for 1900*, 2.

9 “Annual Church Meeting,” *Christian Science Sentinel* 2, (June 7, 1900): 643.

10 Reid Draper Curtis, “Memoirs,” 13.

11 Mary Baker Eddy, *The First Church of Christ, Scientist, and Miscellany*, 170.

12 Reid Draper Curtis, “Memoirs,” 5.

13 Reid Draper Curtis, “Memoirs”; Calvin Hill, “Reminiscences of Mary Baker Eddy,” 23–25, The Mary Baker Eddy Collection, The Mary Baker Eddy Library, Boston, Massachusetts, hereafter referenced as MBEL.

14 Minnie A. Scott to Ethel P. Reid, Dec. 19 [likely 1907], Minnie A. Scott Subject File, MBEL.

15 Minnie A. Scott to Ethel P. Reid, Feb. 10, 1907, Minnie A. Scott Subject File, MBEL.

16 Reid Draper Curtis, “Memoirs,” 13.

17 Minnie A. Scott to Ethel P. Reid, Dec. 25, 1908, Minnie A. Scott Subject File, MBEL.

# YOUR PHILANTHROPY

opens the doors of the Mary Baker Eddy Historic Houses to visitors from around the world—and around the corner!



Carly Hendrickson

For over a century, Longyear has been preserving the history of Mary Baker Eddy and sharing it with a wide range of visitors. People come from around the world to learn about the Discoverer, Founder, and Leader of Christian Science in the very rooms where she lived and worked. They also come from around the corner, curious about the woman who lived in their community over 100 years ago.

One local visitor was surprised and impressed by what he had learned during his tour. He thought he was coming to see period rooms and historic furniture, but as he was leaving, he commented: “How can you not respect what Mrs. Eddy did? You have to keep telling this story. People need to hear it.”

Your gift to the Mary Baker Eddy Historic House Appeal helps us keep the doors of these houses open so we can continue to tell her story—to those who know very little about her, as well as to lifelong Christian Scientists. The whole world deserves the blessings that come from a deeper appreciation of Mrs. Eddy and her selfless work for humanity.

Operating and maintaining these eight important sites costs \$800,000 annually. **We invite you to consider making a gift to this year’s Mary Baker Eddy Historic House Appeal.**

Your financial investment is essential to Longyear’s ability to continue sharing Mrs. Eddy’s story with an ever-widening audience.

## QUESTIONS ABOUT YOUR GIFT?

Please contact:

Noah Ostler  
617.278.9000, ext. 231  
nostler@longyear.org

or

Jack Adler  
617.278.9000, ext. 326  
jadler@longyear.org

Gifts can be made using the envelope inserted in this magazine or online at [longyear.org/support](https://longyear.org/support).

# ‘OLD ABE’ WAS A HERO

BY MAGGIE LEWIS THOMAS  
ILLUSTRATIONS BY MACKENZIE SHIVERS

When President Abraham Lincoln gave the Gettysburg Address, a small boy was watching. William Rathvon was almost nine. It was November of 1863, and the Civil War was raging. The Battle of Gettysburg had been fought four months earlier. William had the day off from school in Lancaster, Pennsylvania. His parents brought him to Gettysburg, where his grandparents, aunt, uncle, and cousins lived, to hear the speech.

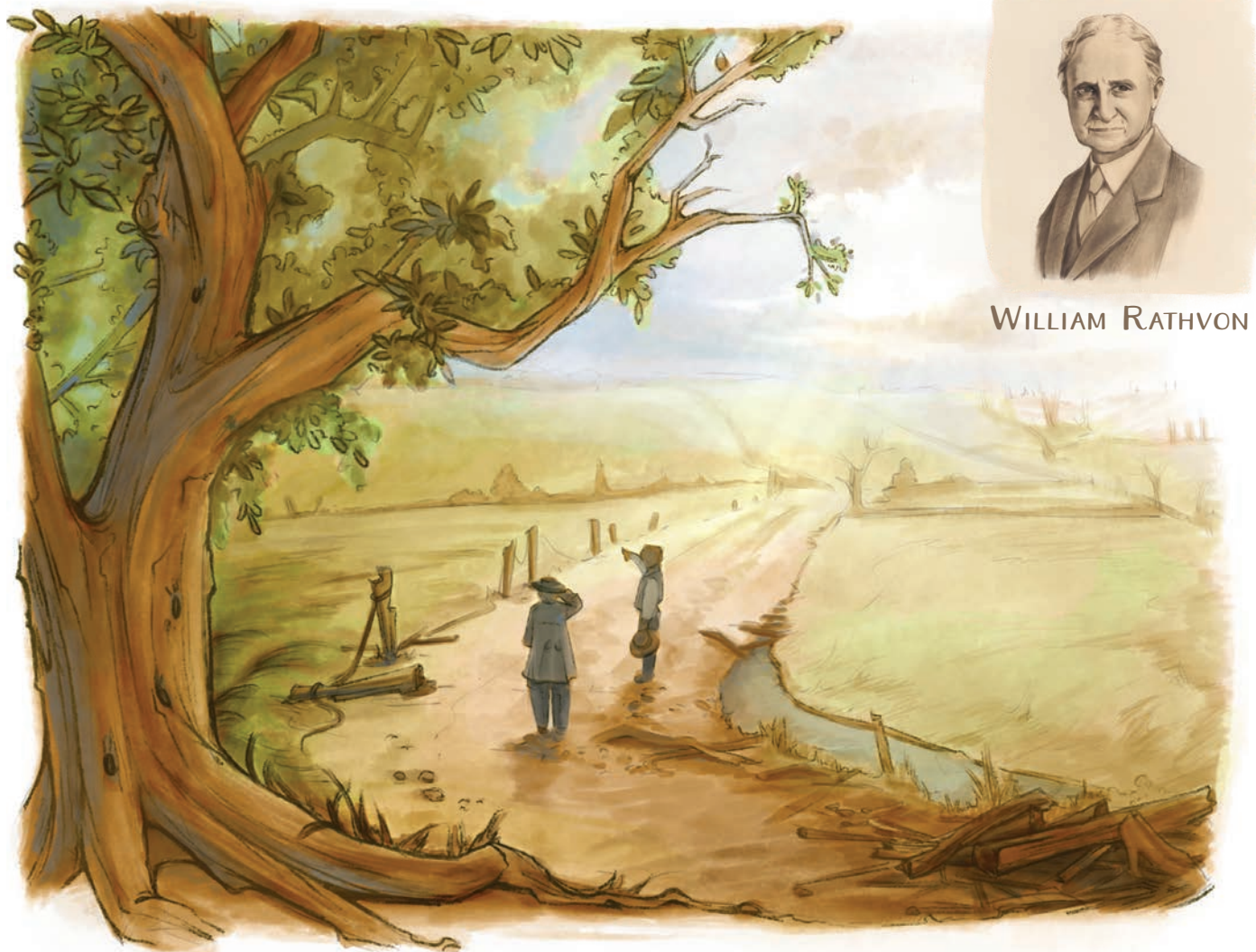
William and his friends called the president by his nickname, “Old Abe.” He was a hero to them. William got close to the speaker’s platform to look up into Mr. Lincoln’s face. “I was less interested in what the president had to say than I was by his appearance, his manner, his voice,” he later explained. “Their homeliness, earnestness, and sincerity impressed me then, and have been with me throughout the succeeding years.”

Today, more than 150 years later, people still love what President Lincoln said that day. He spoke about consecrating Gettysburg National Cemetery. To consecrate means to set something aside as holy, or to honor it. He said, “The brave men, living and dead, who struggled here, have consecrated it, far above our poor power to add or detract.” He ended his short address with the hope “that this nation, under God,



shall have a new birth of freedom—and that government of the people, by the people, for the people, shall not perish from the earth.”

Mary Baker Eddy was a fan of Abraham Lincoln, too. She had his portrait in her house at 400 Beacon Street, in Chestnut Hill, Massachusetts, as well as an engraving of him with his Emancipation Proclamation, which freed enslaved people in the



South. She wrote in *Science and Health with Key to the Scriptures*, “Slavery is not the legitimate state of man. God made man free. Paul said, ‘I was free born.’ All men should be free. ‘Where the Spirit of the Lord is, there is liberty.’ Love and Truth make free, but evil and error lead into captivity” (227).

Forty-five years after hearing the president speak, William Rathvon was helping in Mrs. Eddy’s household. He worked on letters to and from people all over the world. Irving Tomlinson, another helper, said, “In this way he saved [Mrs. Eddy] much time and labor and rendered valuable service to her and the Cause [of Christian Science].” In a picture taken of Mr. Rathvon some years later while he was hard at work at his desk, you can see a portrait of Lincoln on his wall. He thought about “Old Abe” long after that November day in 1863.

Mr. Rathvon remembered family stories of the Battle of Gettysburg. His aunt and uncle’s house briefly became Confederate headquarters when Gen. Richard Ewell took it over. His aunt rode her horse to her parents’ home with her youngest child in her arms. “Good Lord, boys, she’s carrying a baby,” one soldier said, and they let her pass. She rode back the next morning because she had forgotten the family Bible. General Ewell was asleep on the floor, his head resting on it. William was told that “without a moment’s hesitation, she snatched the Bible out from under the general’s head” and rode back to her parents’ house! And William’s grandmother hid Union soldiers from troops that were chasing them. After three days, the Confederate Army retreated.

After the battle, when William was on his summer break, he had walked the battlefield with his friends,

“gouging bullets out of shattered trees.” He later wished he still had one odd lump of lead that looked like a mushroom. It was formed when bullets fired from Confederate and Union rifles hit each other and fused, “falling to the ground harmless, united, and inseparable.” This was a sign to William that the North and the South would “be united by brotherly love into one great nation, ‘which shall not perish from the earth,’” just as President Lincoln hoped on that day in November.

*The anecdotes related in this story are from William Rathvon’s 1938 recording, “I Heard Lincoln That Day,” available through the Longyear Museum store, and an article titled “Lincoln at Gettysburg—A Reminiscence,” published in The Christian Science Monitor in 1930. Irving Tomlinson’s thoughts about Mr. Rathvon are from his reminiscences at the Mary Baker Eddy Library in Boston.*

*Maggie Lewis Thomas is a children’s writer and the head guide at the Mary Baker Eddy Historic House in Amesbury, Massachusetts.*



## What Was The Civil War?

In 1861, the future of the United States of America was in question. Would the country continue as a union of states? Eleven states in the American South had seceded, or withdrawn, from the United States to form their own country, the Confederate States of America.

Tension between the North and the South had been growing for many years, and one important cause was slavery. For generations, millions of enslaved Black people had been forced to work without pay on large plantations in the South. They had no freedom, and they and their families were considered the property of the people who owned the farms. Their ancestors had been captured in Africa and taken against their will to America.

Many people in the North were opposed to slavery, but many in the South believed that it was critical to keep their businesses going. Many Northerners thought the government could end slavery, but many Southerners believed every state should determine what was permissible.

When Abraham Lincoln was elected president of the United States in 1860, many people in the South were afraid that the new president would support only the North. Southern states withdrew from the Union, and on April 12, 1861, the Confederate Army attacked Fort Sumter in South Carolina.

The Civil War had begun. It was a long, sad four years, with many battles between the two armies, sometimes with brother fighting against brother on different sides. Almost everyone in America was affected by the war, including Mary Baker Eddy. Her son, George Washington Glover II, enlisted at 16 to fight for the Union Army, and her second husband, Daniel Patterson, was captured by the Confederate Army and imprisoned, before he managed to escape.

On Jan. 1, 1863, President Lincoln declared that all enslaved people were free with his Emancipation Proclamation. The Battle of Gettysburg in Pennsylvania a few months later was a key turning point in the war, when the North began to move toward victory and the preservation of the United States of America.

---

# FROM THE VAULT



## Sweet Sounds

By Armin Sethna

Music, both sacred and secular, kindled inspiration, enjoyment, and fellowship throughout Mary Baker Eddy's lifetime. And while she was living at 400 Beacon Street in Chestnut Hill, Massachusetts, it was an almost daily feature.<sup>1</sup> While many of the melodies she enjoyed singing (or having sung for her) were long-treasured hymns, she and members of her household also delighted in popular tunes played on one of the home's three pianos, pianola (similar to a player piano), or other musical devices.

"Recorded" music did not exist in the late 1800s: It was either performed live or reproduced through a mechanical music box. In 1897, Mrs. Eddy's student Laura Lathrop, and Laura's son John—energetic and devoted workers in New York City—gave their Leader this intricately carved and illustrated Regina Music Box, which played both

classical and contemporary music using perforated metal discs. It elicited her thanks for such a "kind, thoughtful, tender" gift.<sup>2</sup> (Among the discs stored in the handsome oakwood cabinet was "Then You'll Remember Me," from a mid-1800s opera titled "The Bohemian Girl," which Mrs. Eddy was partial to.)<sup>3</sup>

One Thanksgiving, after a convivial meal at Mrs. Eddy's home in Concord, New Hampshire, a guest recalls that their host "asked that the new music box be started, in order that we might enjoy its sweet sounds."<sup>4</sup>

By the time of the January 1908 move to Chestnut Hill, Thomas Edison's record-playing inventions were rapidly replacing mechanical music boxes.<sup>5</sup> In fact, the household had been given a "Victor talking machine" by Mary Beecher Longyear a few years earlier. Both instruments made the journey, and

the hand-cranked Regina was placed in the formal dining room at 400 Beacon Street, in the "special charge" of Calvin Frye. According to secretary William Rathvon, Mr. Frye would start up the box occasionally "for our delectation" during staff mealtimes, which were "often pleasant breaks in some serious and trying days."<sup>6</sup> Mr. Rathvon did note wryly, however, "I do not remember that an encore was ever requested."<sup>7</sup>

From multiple reminiscences of Chestnut Hill and Pleasant View, these glimpses into the residents' conversation and community, music and merriment, hint at the expansive view of home and hearth Mrs. Eddy treasured—that of the "home of Soul, where sense has no claims and soul is satisfied."<sup>8</sup>

*To see and hear a Regina music box in operation, visit [bit.ly/BohemianGirl](http://bit.ly/BohemianGirl).*



Photos: Ty Parmenter



- 1 For more information on Mrs. Eddy's love of music and its presence in her home, see Chapter 8, "A Joyful Noise," from *Life at 400 Beacon Street: Working in Mary Baker Eddy's Household* (Chestnut Hill, Mass.: Longyear Museum Press, 2019), 207–228, by Heather Vogel Frederick.
- 2 Mary Baker Eddy to Laura Lathrop and John Carroll Lathrop, October 28, 1897, L0246, The Mary Baker Eddy Collection, The Mary Baker Eddy Library, Boston, Massachusetts, hereafter referenced as MBEL.
- 3 Frederick, *Life at 400 Beacon Street*, 214–215.
- 4 Maurine Campbell, *The Story of the Busy Bees*, 1918, 106, MBEL.
- 5 John A. Pfirrmann, "The Age of the Music Box," *Passaic County Historical Society*, Vol. 1969, #2; <https://lambertcastle.org/the-age-of-the-music-box/>
- 6 William R. Rathvon, "Reminiscences of William R. Rathvon, C.S.B.," 94–95, MBEL.
- 7 Ibid.
- 8 Ella S. Rathvon, "Reminiscences," entry for April 21, 1910, MBEL.

*Armin Sethna is Longyear's senior writer/editor.*

**Longyear Museum**, established in 1923, is an independent historical museum dedicated to advancing the understanding of the life and work of Mary Baker Eddy, the Discoverer, Founder, and Leader of Christian Science.

**Longyear Review**, Spring/Summer 2025

**Editor:** Alice M. Hummer

**Design:** Wendy Rankin

**Email us:** [letters@longyear.org](mailto:letters@longyear.org)

**Board of Trustees**

Richard C. Grier, chairman  
James R. Hertlein, vice-chairman  
Francesca Jordan Karpel  
Deborah Thompson McNeil  
James S. Rosebush

**President**

Sandra J. Houston



**LONGYEAR  
MUSEUM**

1125 Boylston Street  
Chestnut Hill, MA 02467-1811  
longyear.org  
800.277.8943 or 617.278.9000

One of Mary Baker Eddy's carriages coming up the drive at 400 Beacon Street, with the carriage house visible in the background. Longyear Museum Collection.

